

The goal of Master Planning is to develop comprehensive, equitable, integrated and visionary high school campus master plans with authentic school community engagement.



## MADISON HIGH SCHOOL MASTER PLAN

Portland Public Schools | Opsi Architecture + Dao

# MASTER PLAN COMMITTEE 02

# AGENDA

## Welcome

Co-Chair Selections

## Review Previous Workshops

Review Outcomes of Educators WS 01  
Review Outcomes of MPC 01  
21st Century Schools Overview

## What is a Master Plan?

Building Assessment + Program Assessment  
21<sup>st</sup> Century Education Trends  
Education Vision

## Interactive Vision Work Session

Translate themes from MPC 01 into a place

## Public Comment

## Next Steps



*“Describe the Madison community  
and what makes it special to you”*

# EDUCATION WORKSHOP 1



# EDUCATION WORKSHOP 1



# EDUCATION WORKSHOP 1



- Common Space Builds Community
- Support Diverse Learning Styles
- Spaces to Collaborate
- Lots of Small Group Space
- Maker Space Engages Students
- Inside / Outside Connections
- Flexible Break-out Space
- Transparency and Visibility

# MASTER PLAN COMMITTEE 01

## Architecture



Comments:

## Athletics / Wellness



Comments:

# MASTER PLAN COMMITTEE 01

## ARCHITECTURE



27 Likes  
0 Dislikes

"I can imagine Madison looking like this."  
Good balance of glass and brick.  
Inviting, contemporary, attractive building.



12 Likes  
0 Dislikes

"Love the view of color"  
"Let's build a 100 year building this time"  
Prominent, welcoming entrance.



9 Likes  
10 Dislikes

Dynamic, exciting exterior.  
Doesn't fit with Madison community.  
Too much glass.



6 Likes  
2 Dislikes

Good balance of glass and brick.  
Attractive, welcoming building.



4 Likes  
1 Dislikes

Nice combination of materials.  
Attractive, welcoming building.



1 Likes  
4 Dislikes

Too much glass. Too transparent.  
Not the right look for Madison.

## ATHLETICS / WELLNESS



24 Likes  
0 Dislikes

Beautiful space.  
Good use of lighting and materials.  
Fun space to be in.



19 Likes  
0 Dislikes

Good natural lighting & views.  
Multi-use space.



14 Likes  
1 Dislikes

"Like the openness - what else is in the space besides the rock walls?"  
Active space. Like the tall ceilings.  
Fun space to be in.



13 Likes  
0 Dislikes

Well-designed weight / fitness room.  
Good use of materials and colors.  
Taller ceilings are good.



12 Likes  
0 Dislikes

Large, flexible, multi-use.  
Very nice gym facility.

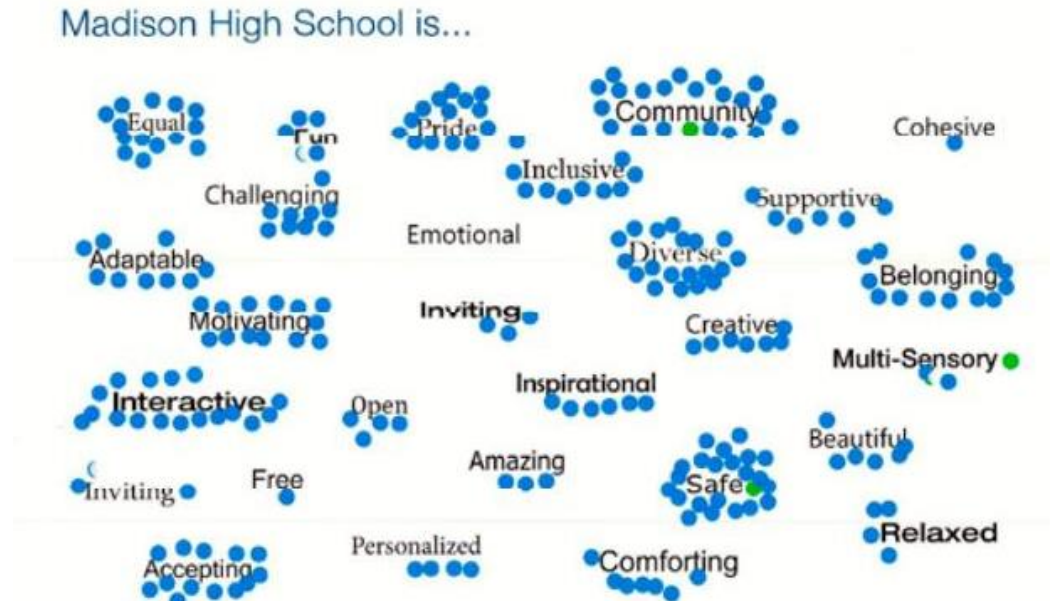


3 Likes  
13 Dislikes

Don't like being able to see into the weight area from the adjacent classroom.

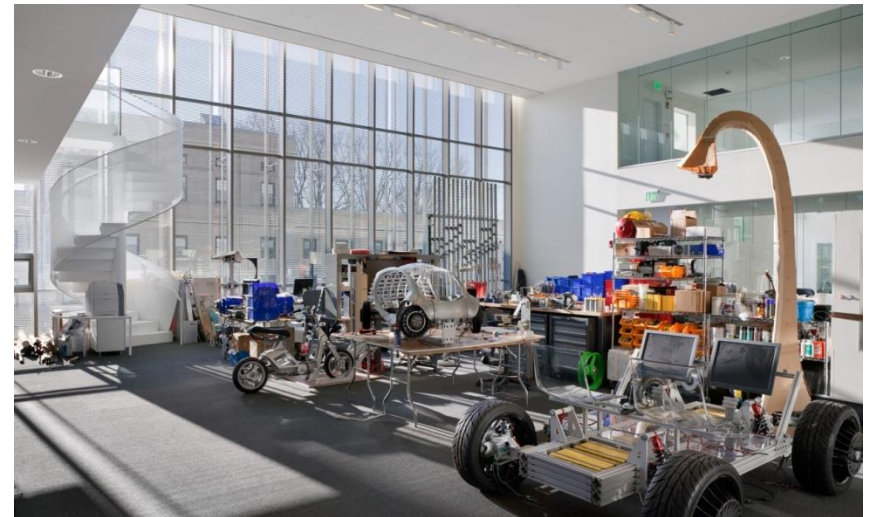
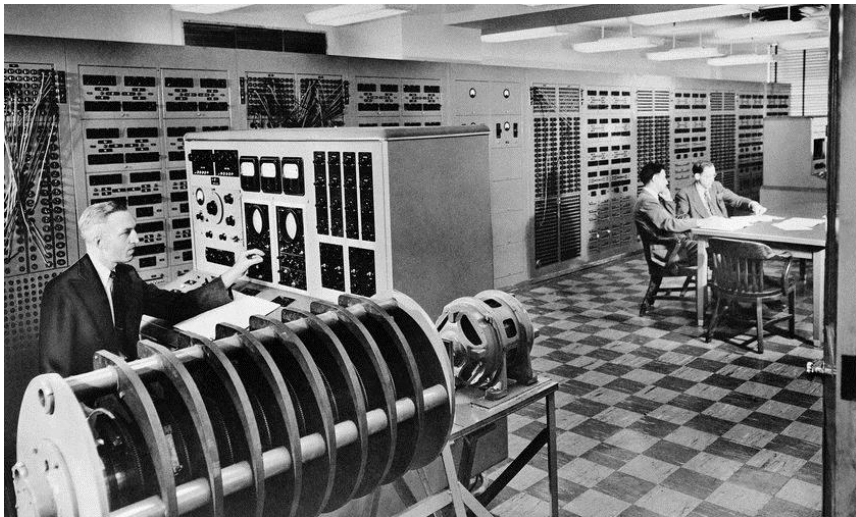
# MASTER PLAN COMMITTEE 01

Safe	23	Supportive	6
Community	22	Inspirational	6
Diverse	19	Beautiful	6
Interactive	17	Inviting	6
Equal	14	Fun	5
Pride	14	Open	4
Motivating	13	Relaxed	4
Accepting	13	Multi-Sensory	4
Belonging	13	Personalized	4
Inclusive	10	Amazing	3
Adaptable	9	Cohesive	1
Challenging	9	Free	1
Creative	7	Emotional	0
Comforting	7		





# 21<sup>ST</sup> CENTURY EDUCATION DESIGN



# 21<sup>ST</sup> CENTURY EDUCATION DESIGN

## Learning Modalities



Specialist



Teacher



Project-based learning



Large Group Instruction



Seminar



Independent Study



Technology-based Learning



Small group Collaboration



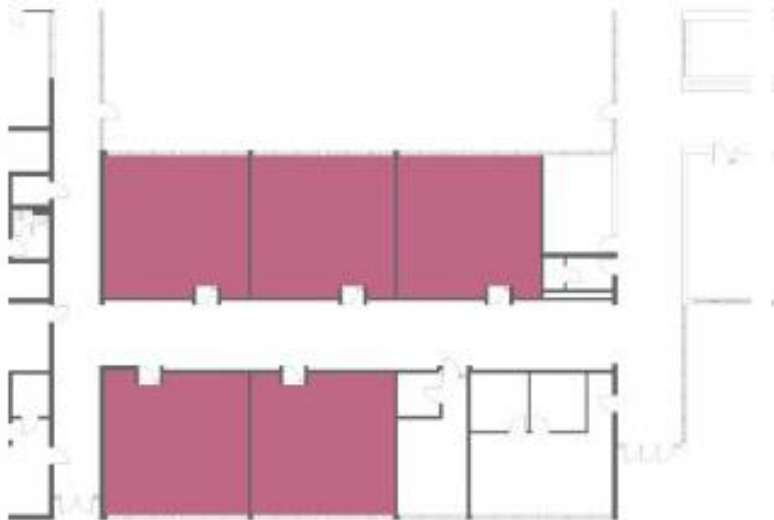
Student Presentation



Play-based Learning

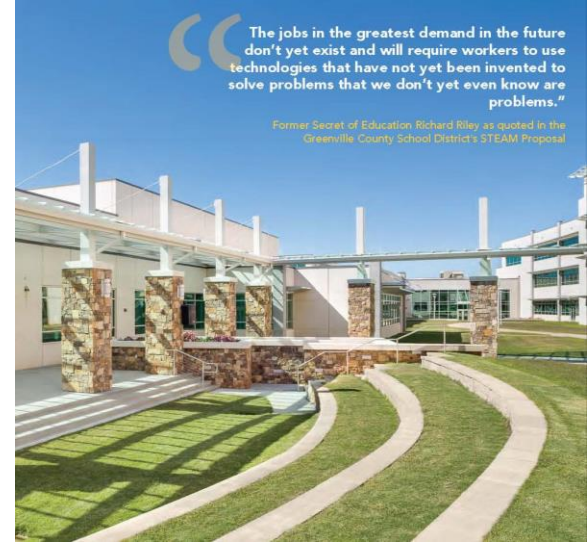
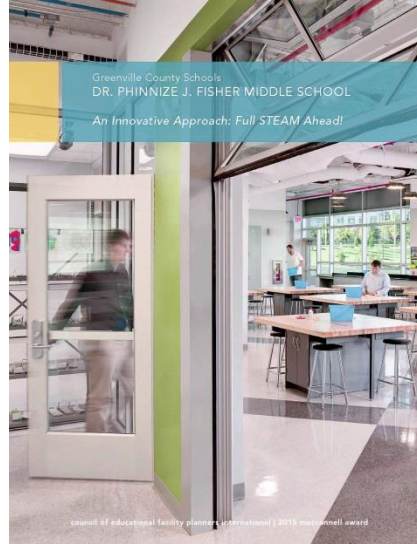


# WHAT MAKES A LEARNING COMMUNITY



**Traditional Double Loaded Corridor**

**Learning Community**



“The jobs in the greatest demand in the future don't yet exist and will require workers to use technologies that have not yet been invented to solve problems that we don't yet even know are problems.”  
 Former Secret of Education Richard Riley as quoted in the Greenville County School District's STEAM Proposal

Greenville County Schools  
 DR. PHINNIZE J. FISHER MIDDLE SCHOOL  
 An Innovative Approach: Full STEAM Ahead!

source of educational facility planning (international) 2015 national award

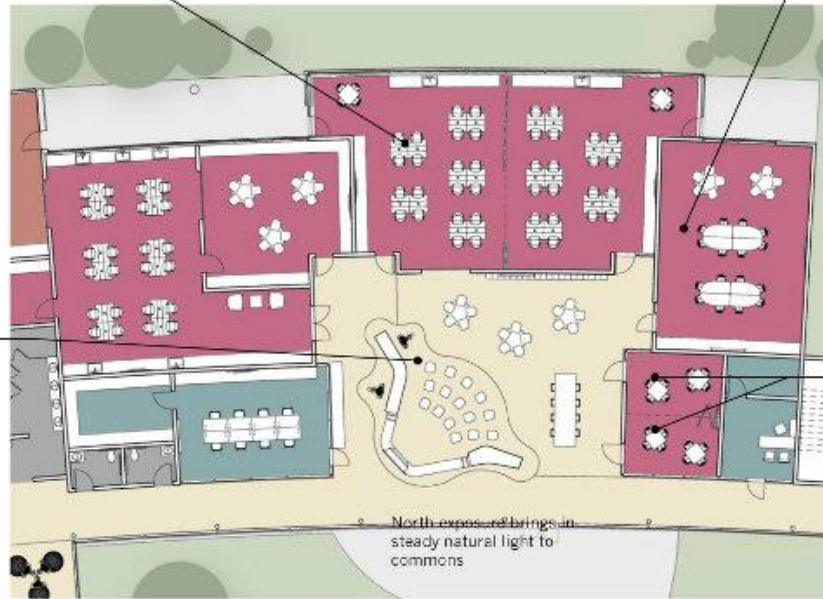
**Learning Suite**

Two flexible learning studios, each ideal for 24-30 students, can be combined by opening folding doors to create a larger space for 60-100 students or for a large project.

Each Learning Studio is connected to the Commons by glass overhead door, providing additional project space.

**Commons**

The heart of the learning community provides space for multiple zones of activity, from large group presentations by education partners like Clemson or BMW, to project based work at the big table, to individual work at the media bar.



**Seminar Room**

Ideal for groups of 8-20 students to discuss, debate, and develop ideas around a conference table in a quieter more focused setting.

A range of technology brings experts from around the world into the room through videoconferencing on flat panel screens. The room also doubles as technology lab, with high end workstations

**“Incubator” Small Group Room**

Ideal for 2-8 students, the “incubators” provide a small, secure place to incubate big ideas. Great for small group breakout space, 1 on 1 instruction, or even individual testing.

### Riverbed Trail

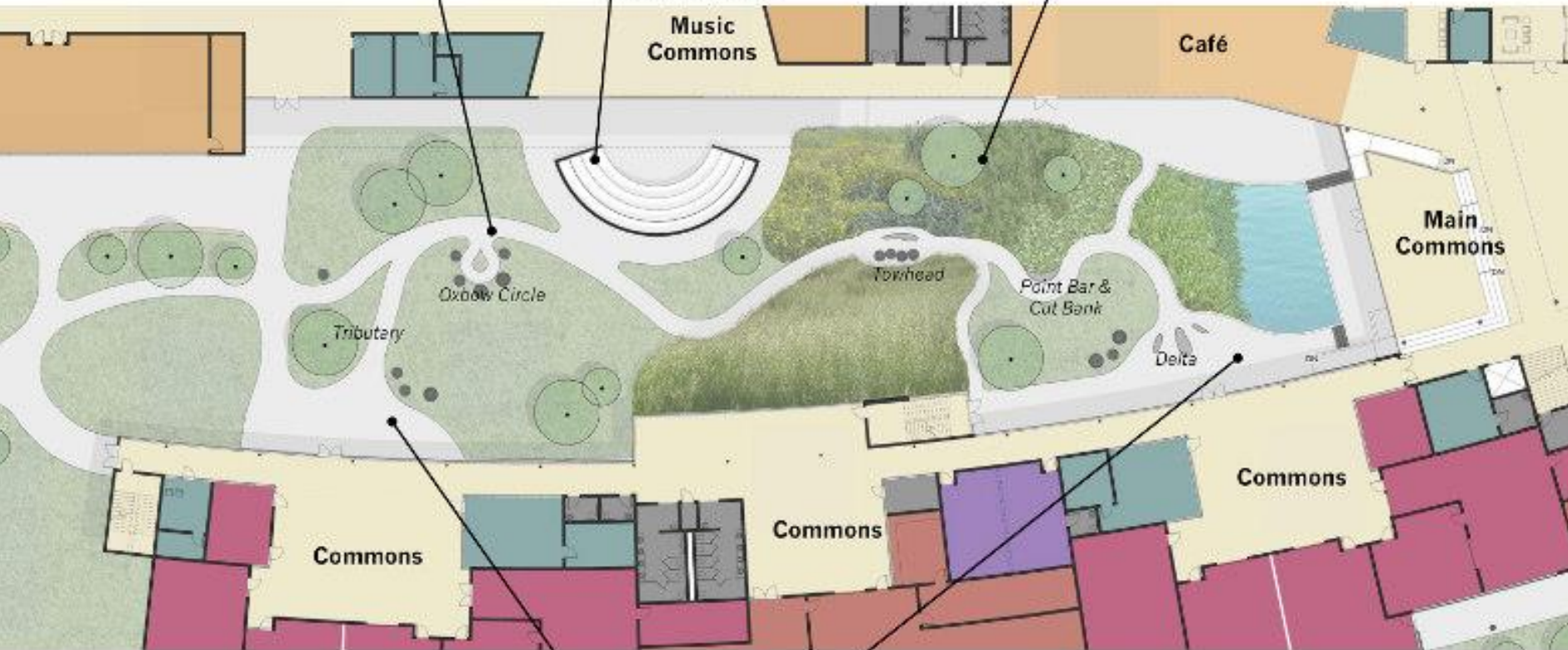
As part of a Learning Landscape, the main path through the courtyard showcases many examples of river geomorphology, such as tributaries and river deltas.

### Amphitheater

Directly facing the Music Commons, the Amphitheater provides a performance space for music, drama, and presentations. The back wall of the Amphitheater displays a geological timeline of South Carolina's natural history.

### Native Plants Rain garden

Sloped roofs capture water and direct it to courtyard for reclamation and reuse as graywater, as a water feature, and as habitat.

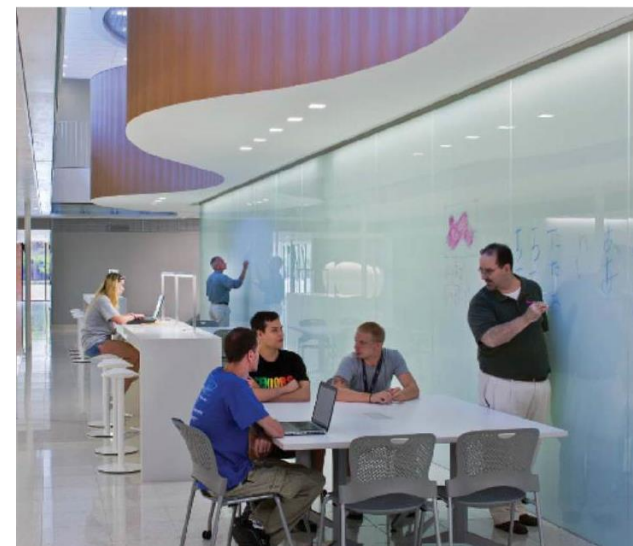


### Project Yards

The Learning Community Commons open onto the Project Yards to allow students to easily work on large or messy projects outdoors



# CLASSROOM

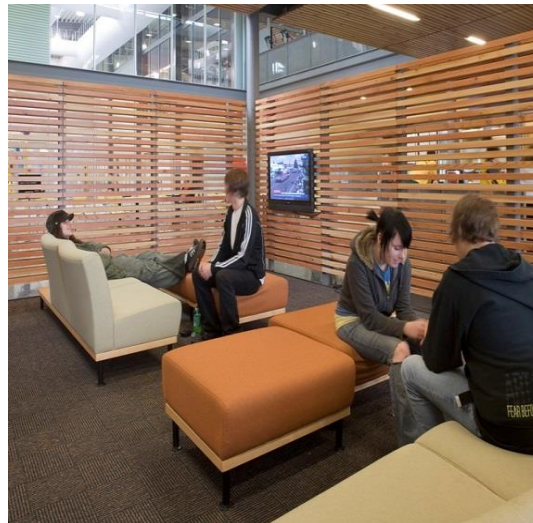


# COMMONS



TRANSPARENCY





# INFORMAL LEARNING



## SMALL GROUP SPACES



# MAKER SPACE



# PERFORMANCE



# OUTDOOR CLASSROOM

# MASTER PLAN PROCESS

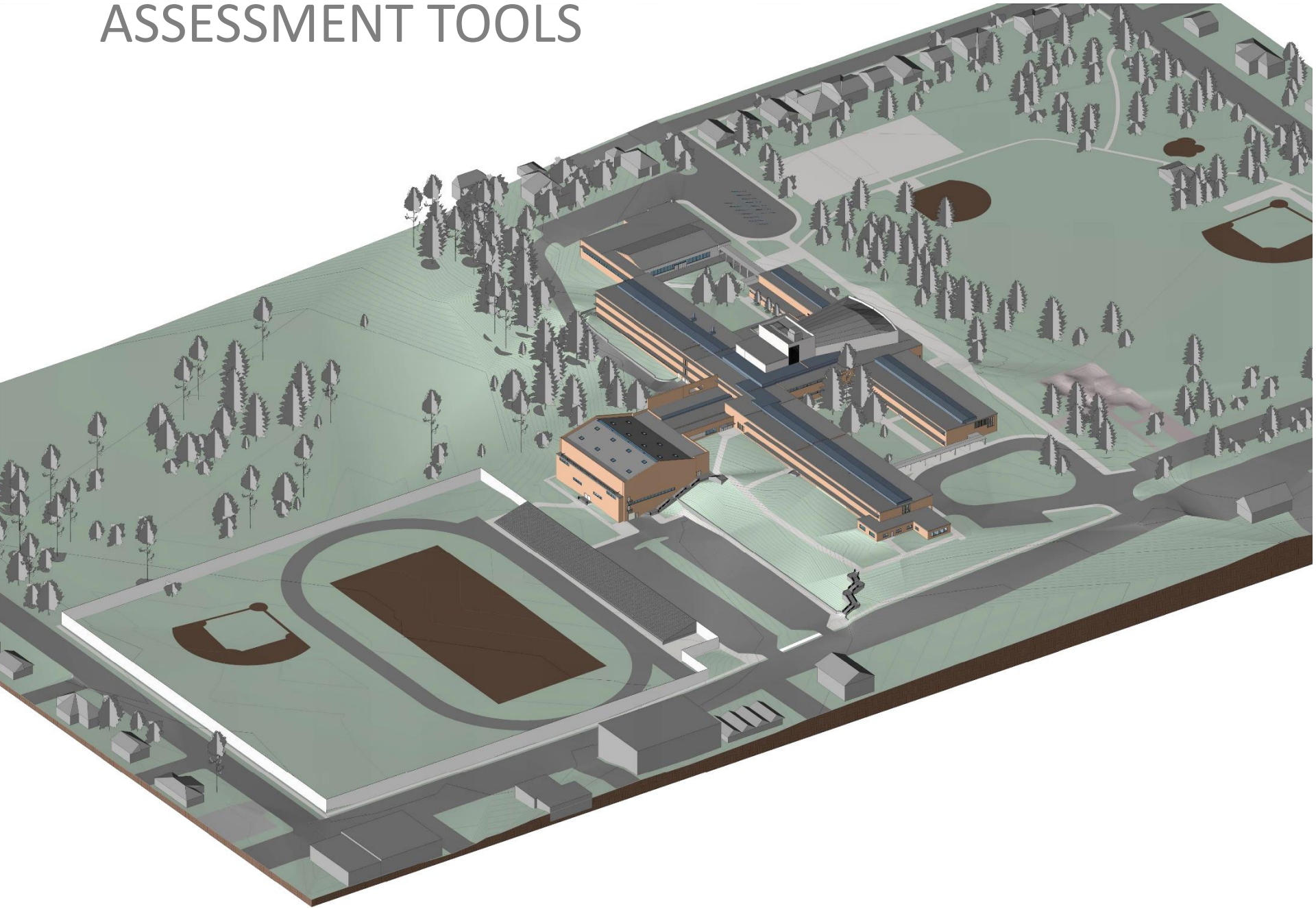
What is a masterplan? *Understanding the end product & goals*

- Building Assessment – Full Modernization
  - Life Safety
  - Structural - Seismic
  - Heating, Cooling, Lighting, Plumbing, Fire Protection
  - Code, Accessibility, Energy, Sustainability
  - Maintenance and Operations
  - 50 years
- Program Assessment
  - Comprehensive High School
  - 1,700 students
  - Flexibility for Future
- Unique Vision – What makes this Madison HS
- Understanding the Program – Education Specifications

# MASTERPLAN PROCESS



# ASSESSMENT TOOLS





# PPS EDUCATIONAL SPECIFICATIONS

## PPS Comprehensive High School(s) Area Program

### SUMMARY

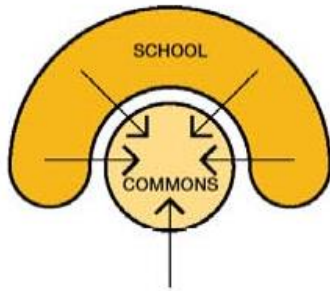
Preferred to required: Optional: not required or applied to total of required

AREA <sup>1,2</sup>	REQUIRED	PREFERRED / OPTIONAL		
	Quantity	Quantity	S.F. Room	S.F. Total
<b>COMPREHENSIVE HIGH SCHOOL PROGRAM - TEACHING STATIONS</b>				
General Education (Gen-Ed) Classrooms	41			48,180
Science Labs	11			16,500
Fine & Performing Arts (Drama, Theater)	4			21,350
Career Preparation/CTE <sup>3</sup>	3			6,000
Athletics (includes area for P.E. instruction)	3			35,580
Education Support <sup>4</sup> (SPED, ELL)	2			67,400
Smaller Instructional Spaces	10			5,000
<b>Sub-Total Required Teaching Stations</b>	<b>74</b>			<b>200,010</b>
Community Partners <sup>5</sup>				1,200
Wrap-Around Service Providers <sup>5</sup>				4,700
<b>Sub-Total</b>				<b>5,900</b>
<b>SUB-TOTAL COMPREHENSIVE HIGH SCHOOL REQUIRED AREA</b>				<b>205,910</b>
<b>Net to Gross Ratio of 36% <sup>6</sup></b>				<b>74,128</b>
<b>TOTAL COMPREHENSIVE HIGH SCHOOL REQUIRED</b>				<b>280,038</b>

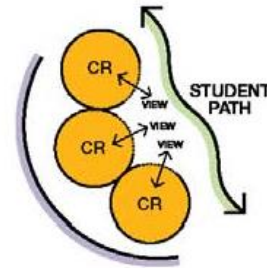
#### Notes:

- <sup>1</sup> Area program for 1,700 student enrollment. Required program refers to the education program needed to meet graduation requirements. The area program includes spaces to accommodate course offerings reflected in credit hours typically taken by students
- <sup>2</sup> Areas identified in Area Program are more readily achieved in new construction; it is expected the area of rooms and spaces in existing buildings will vary from those of the area program to accommodate the floor plates and other structural limitations of existing buildings
- <sup>3</sup> Each Comprehensive High School will contain a minimum of 6,000 SF for career preparation/CTE/Maker Space
- <sup>4</sup> Includes Teacher Workrooms @ 10 teacher offices per workroom
- <sup>5</sup> Assumptions based upon current average area of partners/providers in high schools
- <sup>6</sup> Gross area includes walls, corridors and circulation areas; 36% net to gross for new construction; ratio for modernization projects will vary depending on extent of work

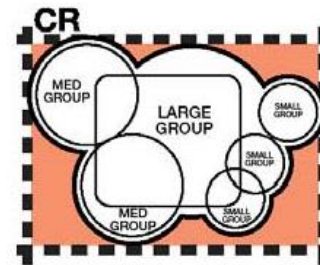
# PPS HIGH SCHOOL PLANNING PRINCIPLES



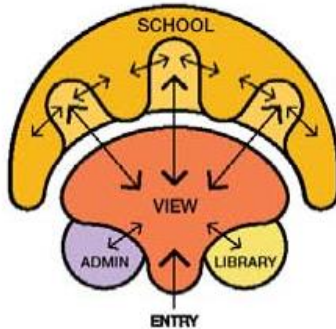
School "Heart"



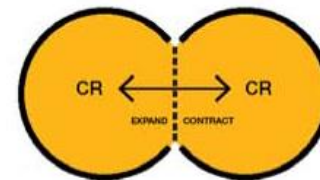
Transparent



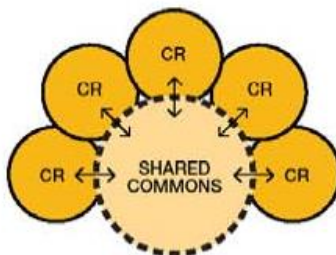
Variety



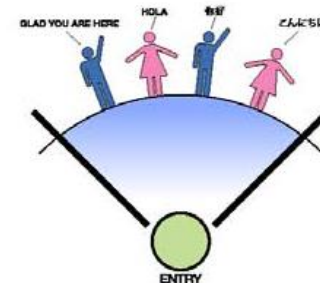
Viewable



Flexible / Agile

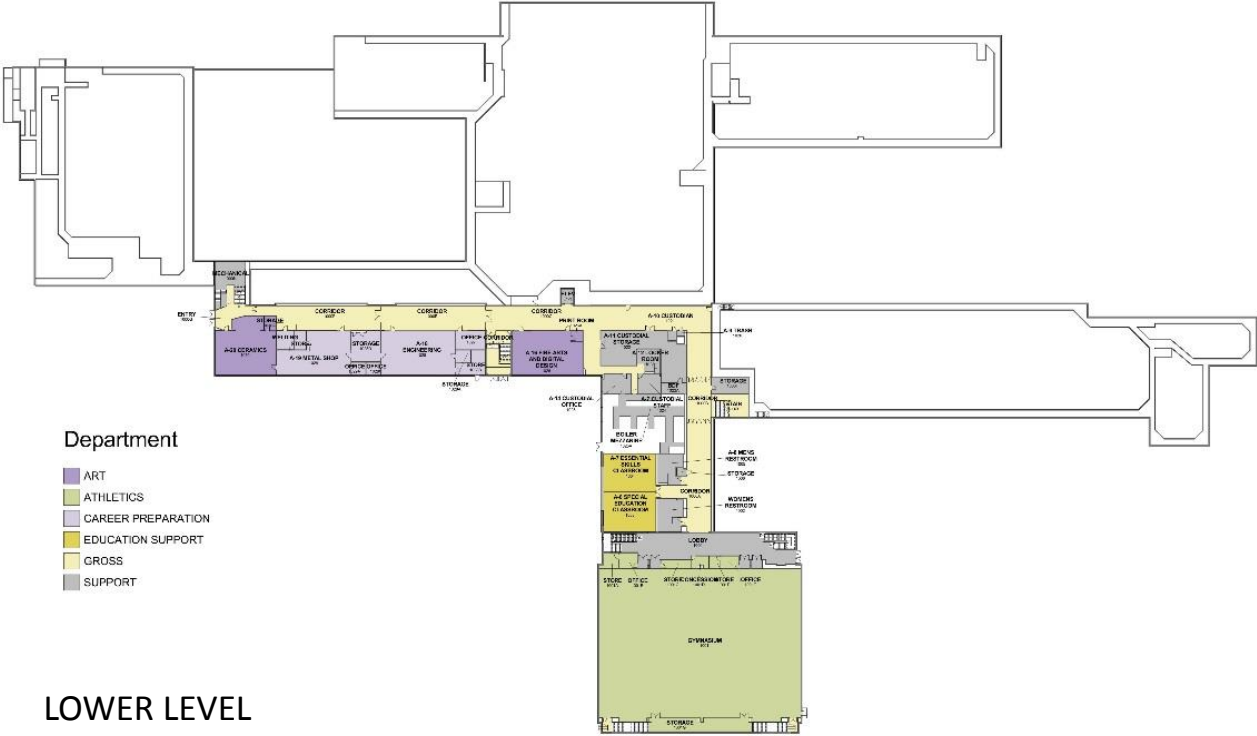


Learning Suite



Entry

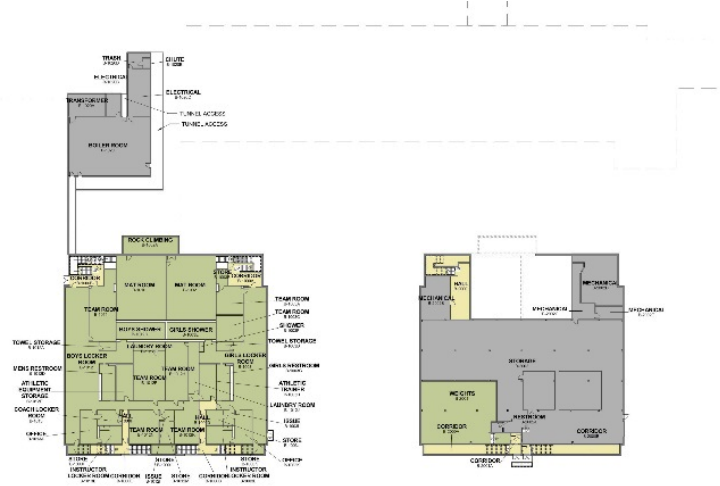
# BUILDING ASSESSMENT



- Department
- ART
  - ATHLETICS
  - CAREER PREPARATION
  - EDUCATION SUPPORT
  - GROSS
  - SUPPORT

## LOWER LEVEL

- Department
- ATHLETICS
  - GROSS
  - SUPPORT



BASEMENT 1

BASEMENT 2

# PROGRAM ASSESSMENT

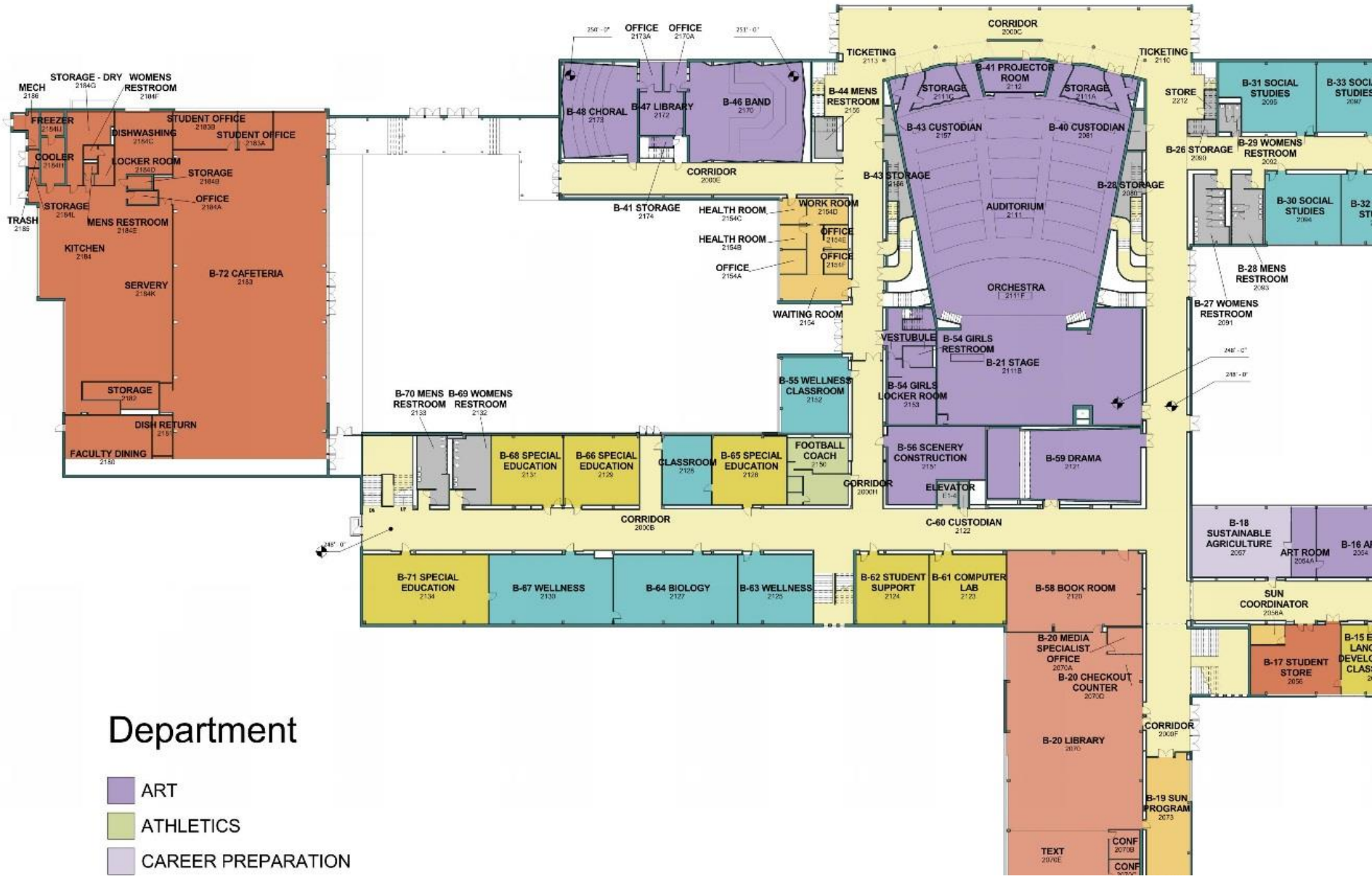


## Department

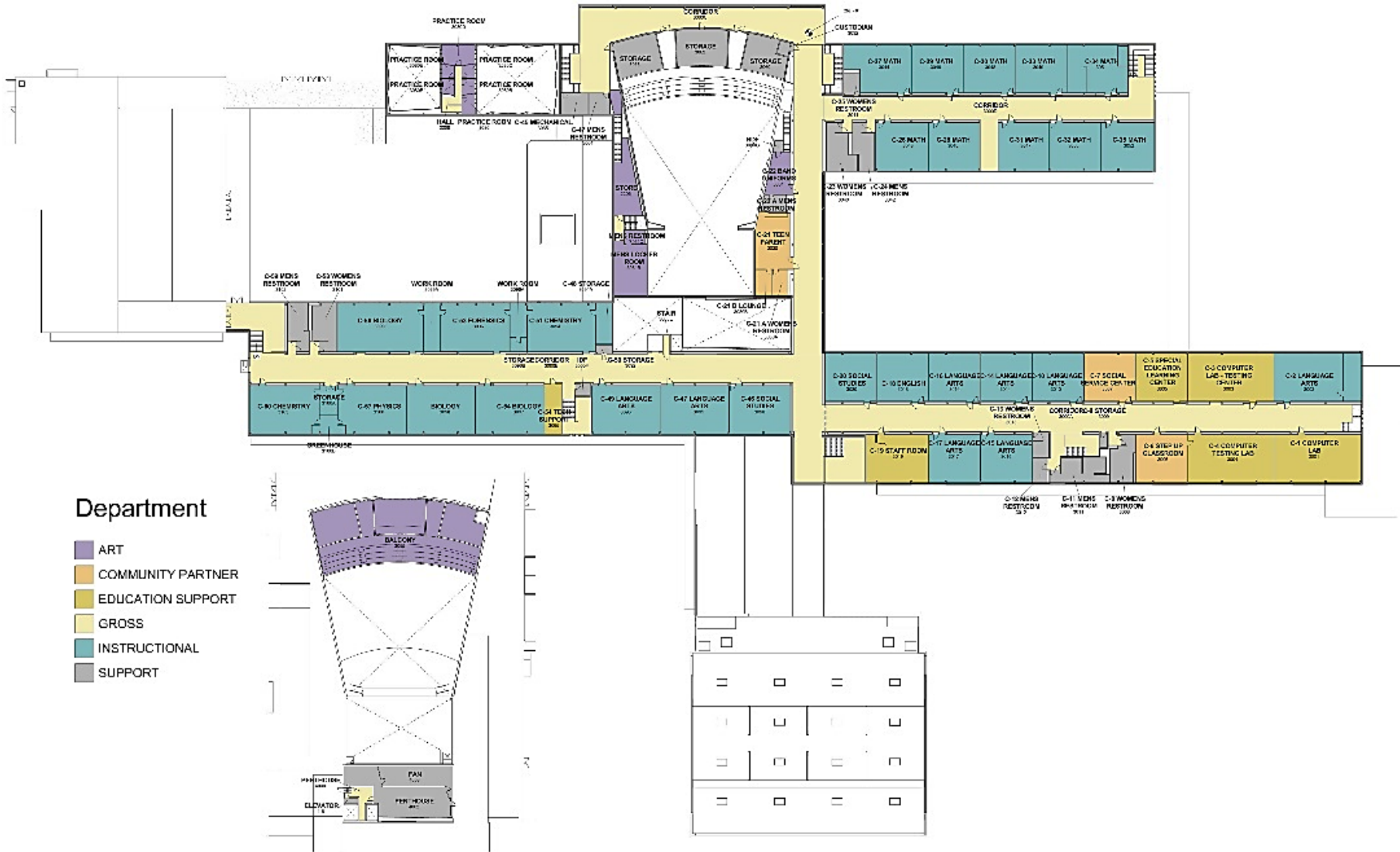
- ART
- ATHLETICS
- CAREER PREPARATION
- COMMONS
- COMMUNITY PARTNER
- EDUCATION SUPPORT
- GROSS
- INSTRUCTIONAL
- LIBRARY
- SUPPORT

MAIN FLOOR LEVEL

# PROGRAM ASSESSMENT



# PROGRAM ASSESSMENT



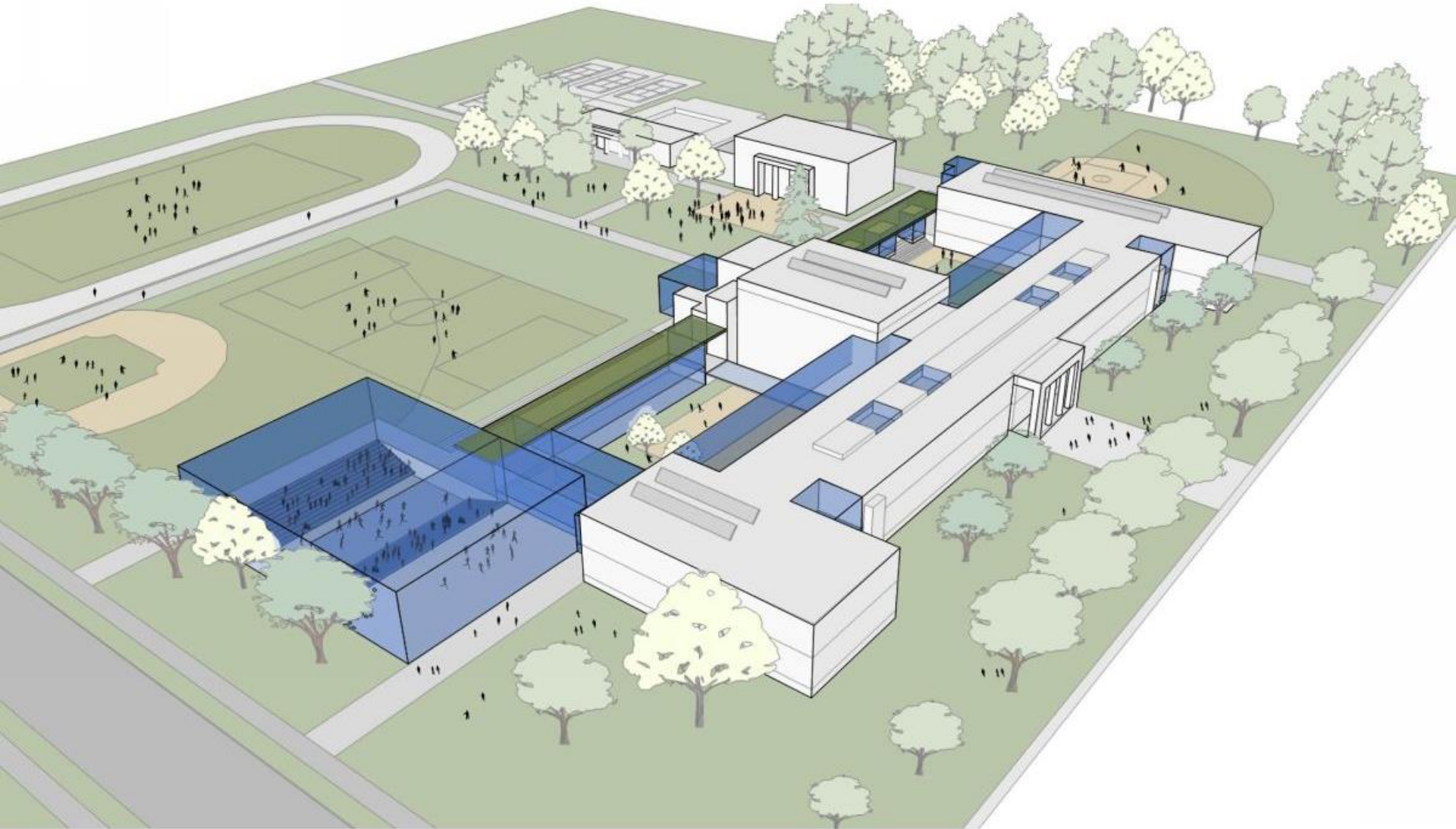
UPPER FLOOR LEVEL

# MASTER PLAN



# GRANT HIGH SCHOOL MASTER PLAN

# MASTER PLAN

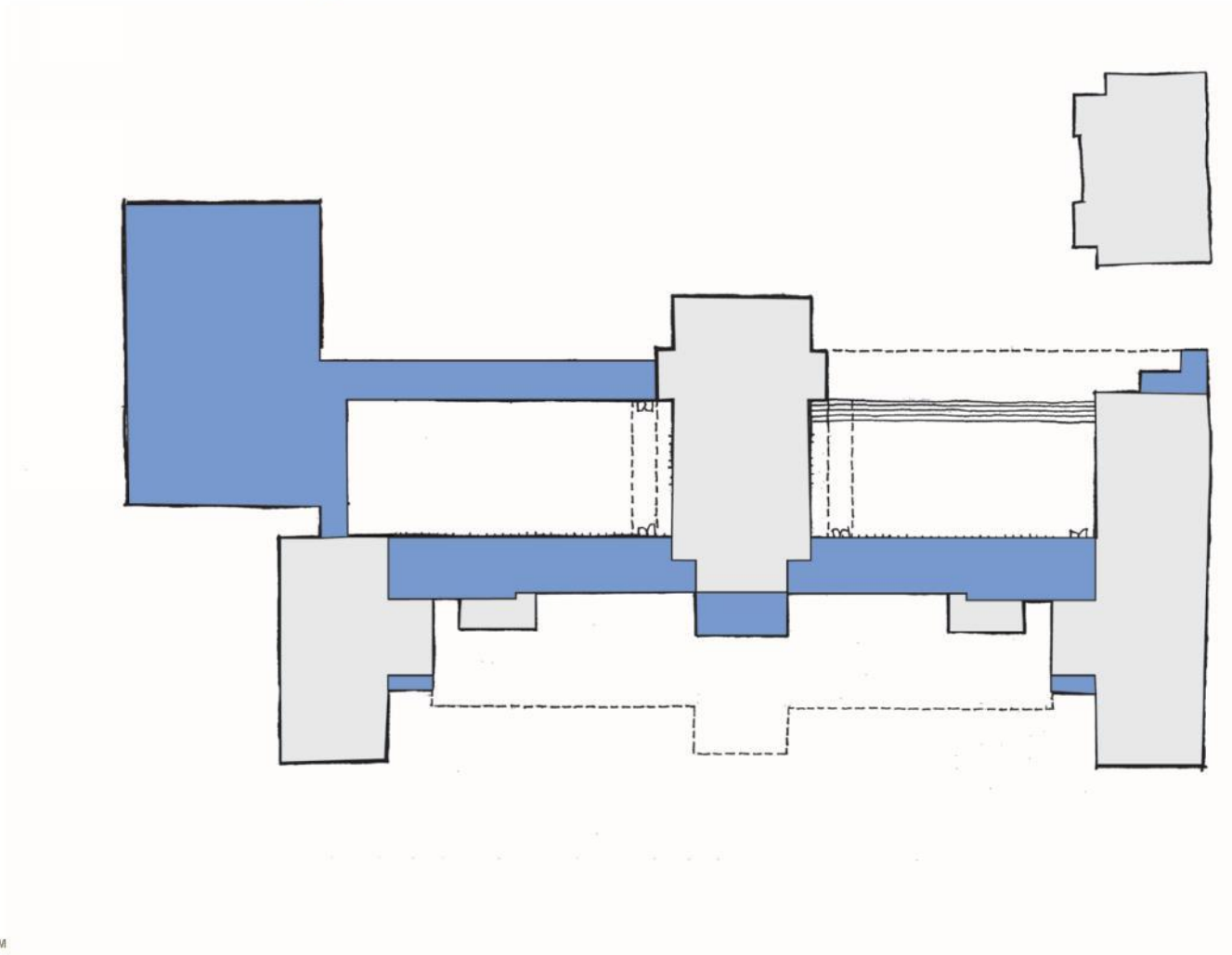


## GRANT HIGH SCHOOL MASTER PLAN



# MASTER PLAN

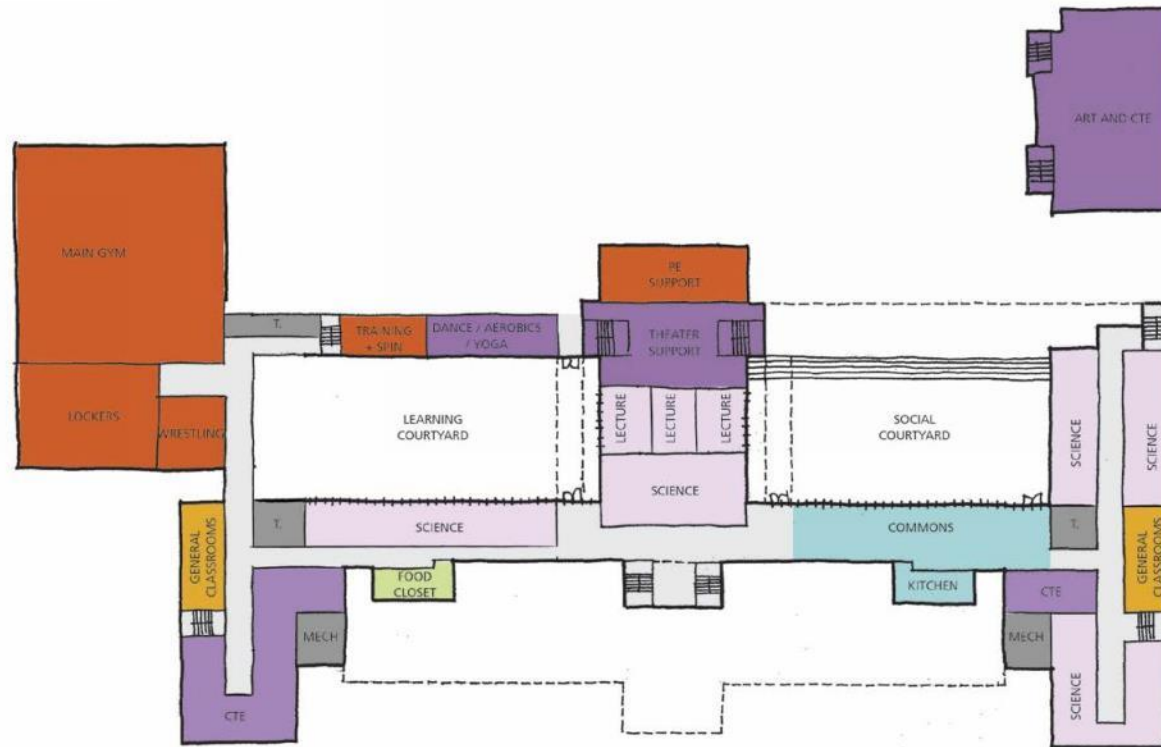
## Preferred Organization :: Ground Floor



© MAHLUM

# MASTER PLAN

## Preferred Organization :: Ground Floor



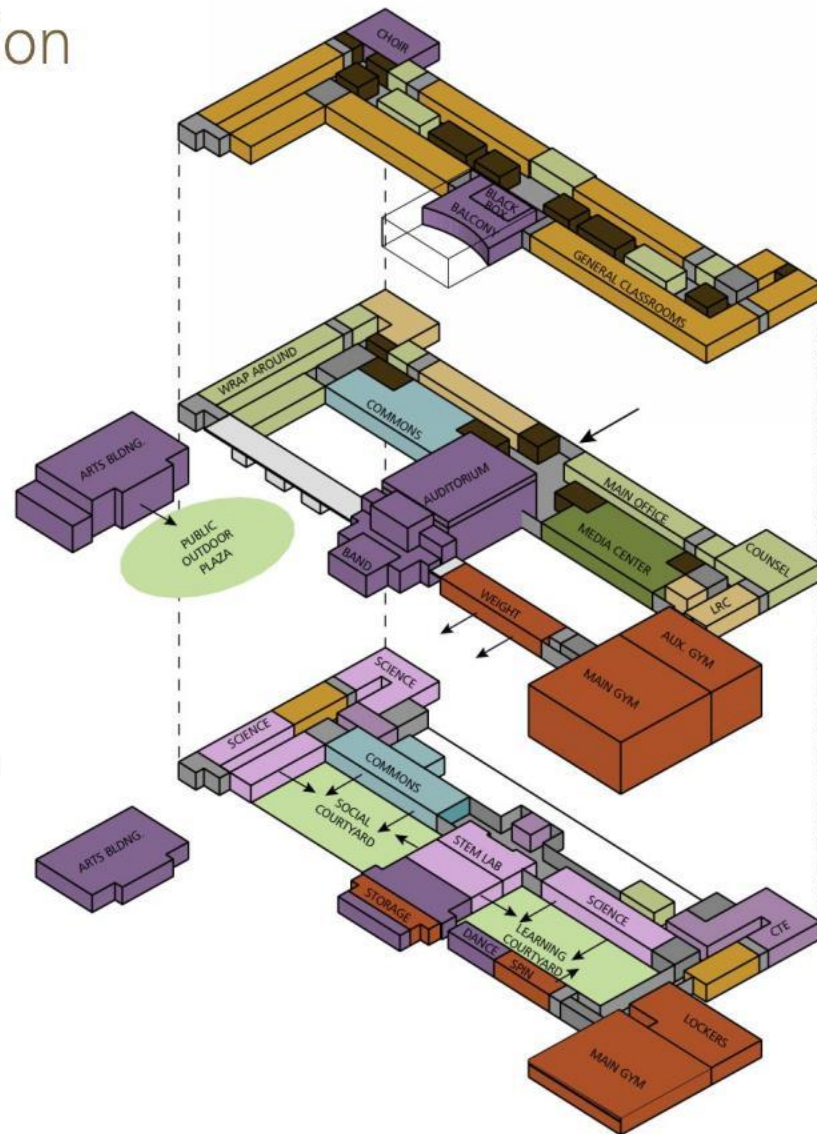
© MAHLUM

## GRANT HIGH SCHOOL MASTER PLAN

# MASTER PLAN

## Preferred Organization

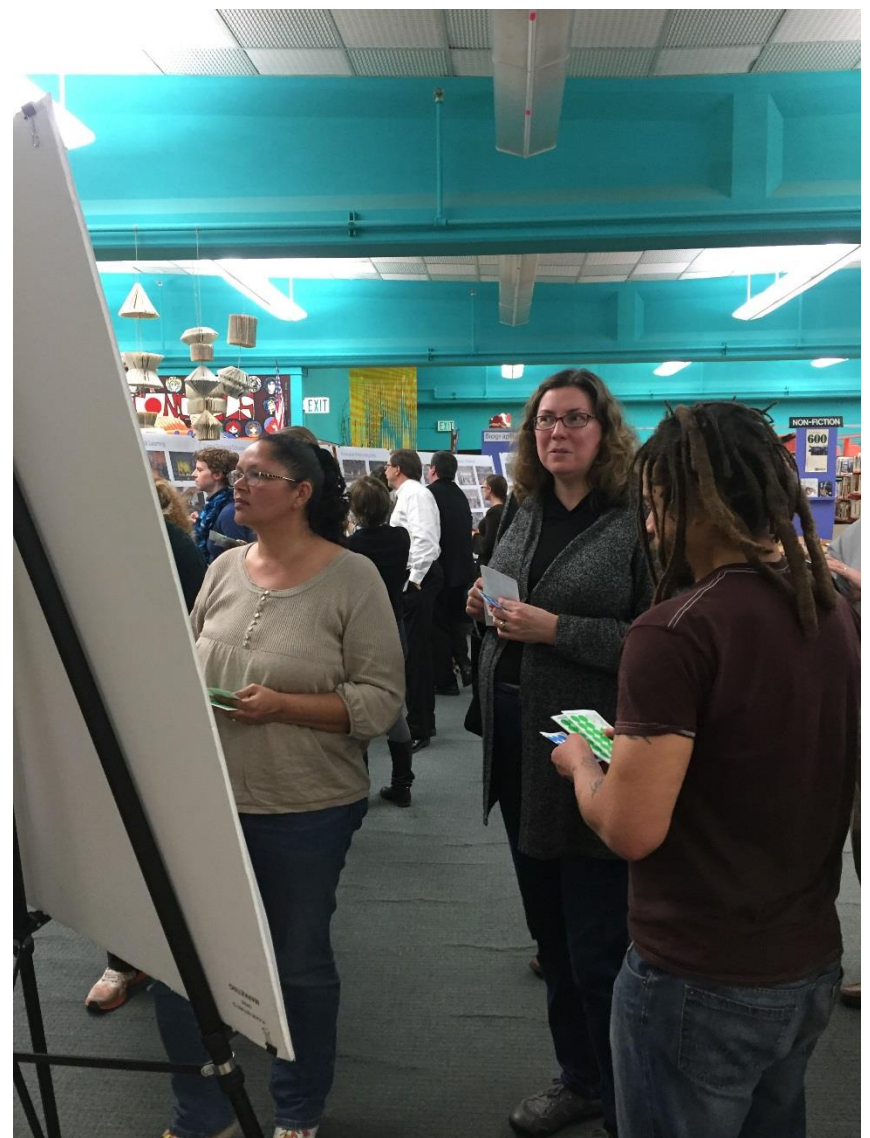
- EXTENDED LEARNING
- GENERAL CLASSROOMS
- MEDIA CENTER
- MEDICALLY FRAGILE AND ISC
- EDUCATION SUPPORT
- STUDENT COMMONS
- SCIENCES / SPECIALIZED CLASSROOMS
- PE / ATHLETICS
- FINE AND PERFORMING ARTS
- CAREER PREPARATION



© MAHLUM

# GRANT HIGH SCHOOL MASTER PLAN

# DESCRIBE THE MADISON COMMUNITY AND WHAT MAKES IT SPECIAL TO YOU



# MADISON HIGH SCHOOL



# MADISON HIGH SCHOOL

## Welcome

Co-Chair Selections

## Review Previous Workshops

Review Outcomes of Educators WS 01

Review Outcomes of MPC 01

21st Century Schools Overview

## What is a Master Plan?

Building Assessment + Program Assessment

21<sup>st</sup> Century Education Trends

Education Vision

## Interactive Vision Work Session

Translate themes from MPC 01 into a place

## Public Comments

## Next Steps